

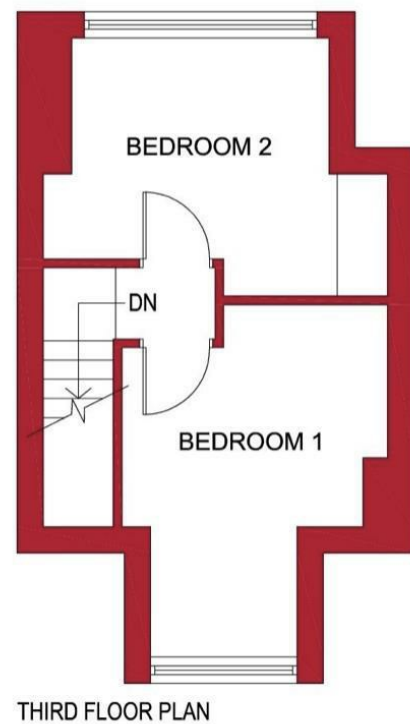
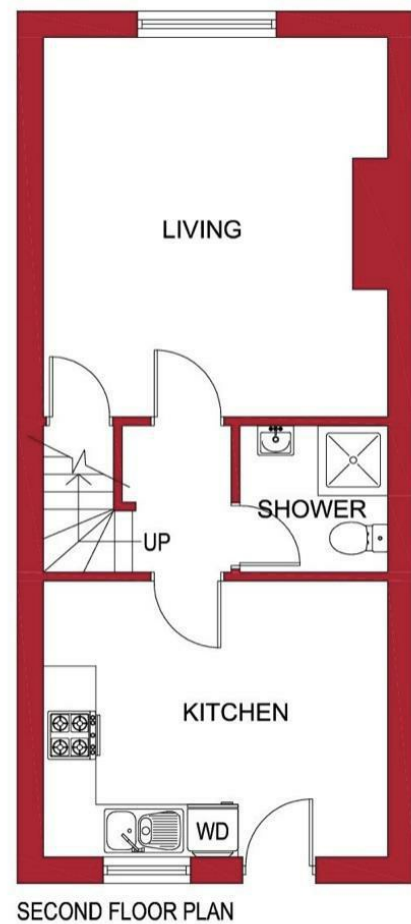
### Viewings

Viewings by arrangement only.  
 Call 0114 2666300 to make an appointment.

### Vendors Comments

Add text here

Energy Efficiency Rating		Current	Potential
Very energy efficient - lower running costs			
(92 plus) <b>A</b>			
(81-91) <b>B</b>			
(69-80) <b>C</b>			
(55-68) <b>D</b>		62	76
(39-54) <b>E</b>			
(21-38) <b>F</b>			
(1-20) <b>G</b>			
Not energy efficient - higher running costs			
<b>England &amp; Wales</b>		EU Directive 2002/91/EC	



836A Ecclesall Road, Sheffield, S11 8TD

£970 Per month

- Student: £112 per person per week
- Bills included option available at £150 per person per week
- Bills included option includes gas, electricity, fibre internet, TV licence and water bills
- Situated on Ecclesall Road
- Available for a group of 2
- Separate kitchen and living room
- No ground floor bedrooms (all bedrooms upstairs)
- Well situated for Sheffield Hallam University
- Early viewing highly recommended to avoid disappointment
- EPC Grade D

# 836A Ecclesall Road, Sheffield S11 8TD

**\*\*\* STUDENT \*\*\* £112 PER PERSON PER WEEK \*\*\* BILLS INCLUDED OPTION AVAILABLE AT £150 PER PERSON PER WEEK (Includes: Gas, electricity, fibre internet, water and TV licence) \*\*\* AVAILABLE FOR A GROUP OF 2 \*\*\***  
A VERY WELL LOCATED, three bedroom TOP FLOOR APARTMENT with ACCOMMODATION OVER TWO FLOORS. Ideal for STUDENTS studying at SHEFFIELD HALLAM UNIVERSITY and close to an abundance of local amenities. Situated in the HIGHLY SOUGHT AFTER location of ECCLESALL ROAD.  
In brief the accommodation comprises: lounge, separate kitchen, two large double bedrooms and a bathroom/WC. An early viewing is highly recommended to avoid disappointment!  
EPC Grade D.



Council Tax Band: A

